



Department of Geosciences

Oregon State University

104 Wilkinson Hall • Corvallis, Oregon 97331-5506

T 541-737-1229 • F 541-737-1200 • E dawn@dusk.geo.orst.edu • <http://dusk.geo.orst.edu>

December 31, 2008

To: Jon Kimerling, Interim Chair of Geosciences

From: Dawn Wright, Professor, Geosciences

A handwritten signature in blue ink that reads "Dawn J. Wright".

Subj: Summary of Activity During OSU Sabbatical

CC: Sherman Bloomer, Dean of the College of Science
Sabah Randhawa, Provost and Executive Vice President
Ed Ray, President

SABBATICAL OBJECTIVES

- Oversee continued growth and momentum of the new International Coastal Atlas Network and its connections to the NOAA Coastal Services Center, the European Environment Agency, and the UNESCO International Oceanographic Data & Information Exchange.
- Concentrate on service obligations to the Association of American Geographers National Council (chair) and the National Academy of Sciences (2 NRC committees and the Ocean Studies Board).
- Submit journal articles, book chapters and special issues already in the queue, as well as several proposals for extramural funding.
- Develop one new seminar course based on a current NSF Ethics in Science and Engineering project.

ADDITIONAL MILESTONES for OSU GEOSCIENCES

- Developed a new special topics seminar course, GEO 599, "Responsible GIS Practice: Ethics for Future Geospatial Professionals," which will be offered winter 2009 and has 15 students enrolled. During the sabbatical I worked with geography professors David DiBiase of Penn State University, Francis Harvey of the University of Minnesota, and Michael Solem of the Association of American Geographers (AAG) on developing this course,

which will also be taught by them at their own institutions. Course development included a workshop with a consulting team of applied ethicists, Michael Davis, Senior Fellow at the Center for the Study of Ethics in the Professions and Professor of Philosophy at the Illinois Institute of Technology; Chuck Huff, Professor of Psychology and specialist in computing ethics at St. Olaf College, Minnesota; and Matthew Keefer, Chair of the Division of Educational Psychology, Research and Evaluation at the University of Missouri at St. Louis.

- Prepared “Points of Pride” PowerPoint resource for Geography program, aka “Geography Programmatic CV” (38 slides with graphics and animation).
- Wrote and gathered letters of support for a successful proposal to ESRI for OSU to be among the inaugural group of “ESRI Development Centers” (EDCs). This new program provides recognition and special status to university departments that have exemplary programs focused on educating students to design and develop GIS applications using ESRI's ArcGIS desktop or server technology. This special designation adds more server technology products, licenses, and trainings to OSU's regular site license status, and may even be a springboard toward establishing a campus data coordination center or GIScience center of excellence.
- Obtained an additional site license for GIS Portal Toolkit software (a third party product not available on the regular site license).
- OSU Representative at the Academic GIS Program Fair, 28th Annual ESRI International User Conference, San Diego, CA, August 2, 2008 (14,000 attendees).
- OSU students:
 - M.S. thesis defense for Kyle Hogrefe, Geography (Spring 2008)
 - Ph.D. dissertation defense for Daniel Lopez-Cevallos, Public Health (Spring 2008)
 - Ph.D. dissertation defense for Wiley Thompson, Geography (Spring 2008)
 - Ph.D. proposal defense for Bob Peckyno, Geography (Fall 2008)
 - Term project with Julie Futch, undergraduate in Women Studies 320, Gender and Technology (Fall 2008, <http://futch.wordpress.com>)
 - Email exchanges with major advisees Michelle Kinzel (Geography, M.S.), Dylan Keon (Geography, Ph.D.), and Debbie Reusser (Geography, Ph.D.)
- Met with senior scientist Karen Kemp about a future collaboration between OSU Geosciences and the Kohala Center (<http://www.kohalacenter.org>), an independent, non-profit academic institute for environmental science research and education in Kailua-Kona, Hawaii. The collaboration would

include a physical and resource geography course on the Kona coast of Hawaii island, where undergrads and grads would be hosted by the Kohala Center but receive OSU credit. Also discussed were cooperative activities of mutual interest between the institutions, including collaborative research projects.

PROFESSIONAL PRESENTATIONS / SEMINARS

February *The Oregon Coastal Atlas: Infrastructure for Data Sharing, Spatial Analysis, Resource Decision-Making and Societal Impact*, IODE **Workshop on Coastal Atlas Requirements, UNESCO IODE (International Oceanographic Data & Information Exchange) Headquarters, Oostende, BELGIUM.**

Towards an International Coastal Atlas Network (ICAN), IODE **Workshop on Coastal Atlas Requirements, UNESCO IODE Headquarters, Oostende, BELGIUM.**

Exploring the Deep with Cool Vehicles and Maps, **Bishop Dunne Catholic School Student/Parent Evening Lecture and Q&A**, Dallas, TX.

Exploring the Deep: Cracks, Creatures, and Creative Maps of the Ocean Floor, **Evening Lecture Public Lecture, Bishop Dunne Catholic School**, Dallas, TX.

Interview with Krys Boyd, for *Think*, a topic-driven radio program on **KERA, an NPR affiliate**, Dallas, TX, <http://www.kera.org/think> (1 hour radio interview).

March *The Exciting World of Ocean Exploration and Science for Teaching and Learning*, **GeoTech 2008**, Dallas, TX, **Invited Keynote Address**.

Coffee with 'Deepsea Dawn', **GeoTech 2008** Conference, Dallas, TX (1 hour discussion, question/answer session after keynote address).

Spatial Reasoning at Sea and Ashore: Directions and Challenges in Ocean Informatics, **Department of Geography and Regional Development Colloquium, University of Arizona**, Tucson, AZ.

NSF-funded Ethics Education for Future Geospatial Technology Professionals Workshop, Cosmos Club, Washington, DC.

April

AAG National Council Meeting, Marriott Copley Place, Boston, MA.

Cyberinfrastructure Panel, **Association of American Geographers (AAG) Annual Meeting**, Boston, MA, Invited Panelist with Rob Raskin (NASA JPL), Mark Gahegan (U. of Auckland), Tim Nyerges (U. of Washington), Dan Hammel (NSF), and Shashi Shekar (U. of Minnesota).

Geographies of Information Society, **AAG Annual Meeting**, Boston, MA, Invited Panelist with Hamid Ekbia (Indiana U.), Nadine Schuurman (Simon Fraser), Tom Evans (Indiana U.), Jessie Poon (SUNY-Buffalo), Francis Harvey (U. of Minnesota), and Andre Skupin (San Diego State).

Ethics Education for Graduate Programs in Geographic Information Science and Technology, **AAG Annual Meeting**, Boston, MA, Invited Panelist with David DiBiase (Penn State), Will Craig (U. of Minnesota), Jeremy Crampton (Georgia State), and Jerry Dobson (U. of Kansas).

Marine Geomorphology as a Determinant for Essential Life Habitat: An Ecosystem Management Approach to Planning for Marine Reserve Networks I, II, and III, **AAG Annual Meeting**, Boston, MA, Sessions Co-organizer, Chair, and Discussant.

The Quest for a High-resolution Map of the Oregon Territorial Seafloor in the Context of Current West Coast Marine Reserve Initiatives, **AAG Annual Meeting**, Boston, MA, Presenter.

Marine Geomorphology as a Determinant for Essential Life Habitat Panel, **AAG Annual Meeting**, Boston, MA, Panelist with Will Heyman (Texas A&M), Andrew Heap (Geoscience Australia), Douglas Fischer (Cal State-Northridge), Gary Greene (Moss Landing Marine Labs), and Will McClintock (UCSB).

May

NSF Site Visit, NSF Office of Cyberinfrastructure, Data Interoperability Networks (DataNet), University of Washington, Seattle, WA.

National Academy of Sciences, NRC Strategic Directions for the Geographical Sciences in the Next Decade Committee Meeting, Irvine, CA.

Spatial Reasoning at Sea and Ashore: Directions and Challenges in Ocean Informatics, **Department of Environmental Earth System Science Seminar, Stanford University**, Palo Alto, CA.

- June** *Graduate Ethics Education Case Studies, UCGIS Summer Assembly*, Hubert H. Humphrey Institute, University of Minnesota, Minneapolis, MN, Presenter.
- UCGIS Summer Assembly**, Hubert H. Humphrey Institute, University of Minnesota, Minneapolis, MN, Meeting Co-Organizer, Co-Chair.
- July** *The International Coastal Atlas Network (ICAN), European Environment Agency (EEA) Conference on Coastal Atlas Development*, EEA Headquarters, **Copenhagen, DENMARK**, Invited Presenter and Discussant with Ned Dwyer, CMRC, Ireland.
- Coastal Atlas Interoperability Sessions, ICAN Workshop 3 on Federated Coastal Atlases: Building on the Interoperable Approach*, sponsored by the European Environment Agency (EEA), EEA Headquarters, **Copenhagen, DENMARK**, Workshop Co-Organizer, Co-Chair, Blogger, Working Group Leader, and Web Editor.
- August** *Marine Special Interest Group: Extending the Arc Marine Data Model, 28th Annual Environmental Systems Research Institute User Conference*, San Diego, CA, Invited Presenter.
- September** *Digital Globes Panel, GIScience 2008: 5th International Conference*, Park City, UT, Invited Plenary Panelist with Mike Goodchild (UCSB), Vincent Tao (Microsoft Virtual Earth Team), Rob Raskin (NASA JPL), and Chaowei "Phil" Yang (George Mason U.).
- Semantic Mediation as a Gateway to Interoperability, with a Case Study of the International Coastal Atlas Network (ICAN), GIScience 2008: 5th International Conference*, Park City, UT, Presenter.
- Geosensors II, GIScience 2008: 5th International Conference*, Park City, UT, Invited Chair.
- Cyberinfrastructure for GIScience, GIScience 2008: 5th International Conference*, Park City, UT, Workshop Co-organizer, Presenter, and Discussant.
- National Academy of Sciences**, NRC Strategic Directions for the Geographical Sciences in the Next Decade Committee Meeting, Woods Hole, MA.

- October** *The International Coastal Atlas Network, FGDC Marine and Coastal Spatial Data Subcommittee Meeting, NOAA Headquarters*, Silver Spring, MD, Invited Presenter.
- Spatial Reasoning at Sea and Ashore: Directions and Challenges in Ocean Informatics, Virginia Institute of Marine Science, Hall-Bonner Lectureship Program, College of William & Mary*, Gloucester Point, VA.
- Spatial Reasoning at Sea and Ashore: Directions and Challenges in Ocean Informatics, Department of Earth, Ocean, and Atmospheric Sciences, Old Dominion University*, Norfolk, VA.
- Careers and Coping for Minority Students in Marine Science, Hall-Bonner Lectureship Program, Hampton University*, Hampton, VA.
- National Academy of Sciences**, Ocean Studies Board Meeting, Woods Hole, MA.
- International Council for Science, **Scientific Committee on Oceanic Research (SCOR) General Meeting and 50th Anniversary Symposium**, Woods Hole, MA.
- November** **AAG National Council Meeting**, University of North Carolina-Greensboro, Greensboro, NC.
- December** **Pacific Climate Risk Workshop, Collaborative Pacific Research Group**, Social Science Research Institute, University of Hawaii, Honolulu, HI.

PUBLICATION MILESTONES

Books Under Contract

Wright, D.J., Dwyer, E., and Cummins, V. (Eds.), D., *Handbook of Research on Coastal Informatics: Web Atlas Design and Implementation*, Hershey, PA: IGI-Global.

Valavanis, V.D., **Wright, D.J.**, Georgakarakos, S., and Kitsiou, D., *Marine Geographical Information Systems: Theory and Applications*, Advances in Geographic Information Science Series, Berlin/Heidelberg: Springer-Verlag.

Peer-Reviewed Journal Articles and Book Chapters

- Dobson, J.E., Caplan, A., DiBiase, D., Downing, T.E., Harvey, F., and **Wright, D.**, Communications arising: Human subjects research, *Nature*, in review, 2009.
Wright contributed pieces of text throughout the manuscript.
- Heyman, W.D., and **Wright, D.J.**, Marine geomorphology in the design of marine reserve networks, *The Professional Geographer*, submitted, 2008.
Wright contributed text throughout the manuscript.
- Heyman, W.D., and **Wright, D.J.** (eds.), Special focus section: Marine geomorphology in the design of marine reserve networks, *The Professional Geographer*, submitted, 2008.
- Hogrefe, K.R., **Wright, D.J.**, and Hochberg, E.J., Derivation and integration of shallow-water bathymetry: Implications for coastal terrain modeling and subsequent analyses, *Marine Geodesy*, 31(4): 299-317, 2008.
Wright advised the lead author (her M.S. student) throughout the research, contributed text to the introduction, methods, and discussion, and edited all sections of the paper.
- Lassoued, Y., **Wright, D.J.**, Bermudez, L., and Boucelma, O., Ontology-based mediation of OGC Catalogue Service for the Web requests: A virtual solution for integrating coastal web atlases, *Proceedings of ICISOFT 2008, 3rd International Conference on Data and Software Engineering*, Berlin: Springer, 2008.
Wright contributed text to the intro, discussion and concluding sections of this paper for the computer science community.
- Lufafa, A., Bolte, J., **Wright, D.**, Khouma, M., Diedhiou, I., Dick, R.P., Kizito, F., Dossa, E., and Noller, J.S., Regional carbon stocks and dynamics in native woody shrub communities of Senegal's Peanut Basin, *Agriculture, Ecosystems & Environment*, 127(3-4): doi:10.1016/j.agee.2008.04.013, 2008.
Wright served on the lead author's doctoral committee and advised on pertinent literature, GIS procedures, and clarity of the text.
- Wright, D.J.**, GIScience, in Warf, B., James, A., and Jankowski, P. (eds.), *Encyclopedia of Geography*, Thousand Oaks, CA, Sage Publications, 13 manuscript pages, in review, 2009.
- Wright, D.J.**, Spatial data infrastructures for coastal environments, in Yang, X. (ed.), *Remote Sensing and Geospatial Technologies for Coastal Ecosystem Assessment and Management*, Lecture Notes in Geoinformation and Cartography, Berlin: Springer-Verlag, DOI 10.1007/978-3-540-88183-4_5, 91-112, 2009.
- Wright, D.J.** and Wang, S., Geographic cyberinfrastructure, *Proceedings of the National Academy of Sciences*, in prep., 2008.
- Wright, D.J.** and Wang, S. (eds.), Geographic cyberinfrastructure, Special Perspectives issue of *Proceedings of the National Academy of Sciences*, in prep., 2008.
- Wright, D.J.**, Duncan, S.L., and Lach, D.H., Social power and GIS technology: A review and assessment of approaches for natural resource management, *Annals of the Association of American Geographers*, in press, 2009.
- Wright, D.J.** and Heyman, W.D., Marine and coastal GIS for geomorphology, habitat mapping, and marine reserves, *Marine Geodesy*, 31(4): 1-8, 2008.
- Wright, D.J.** and Heyman, W.D. (eds.), Sixth special issue on marine and coastal geographical information systems: Marine and coastal GIS for

geomorphology, habitat mapping, and marine reserves, *Marine Geodesy*, 31(4); 223-371, 2008.

Articles and Conference Papers Reviewed by Editor or Editorial Board

- Goodchild, M., Mark, D., Raskin, R., Tao, V., **Wright, D.**, and Yang C., Digital Earth plenary panel, in Cova, T., Miller, H., Beard, K., Frank, A.U., and Goodchild, M.F. (eds.), *Geographic Information Science: 5th International Conference, GIScience 2008*, Park City, Utah, September 23-26, 2008, Extended Abstracts, 7, 2008..
- Harvey, F., DiBiase, D., and **Wright, D.J.**, Geographic information ethics and GIScience: Developing a model curriculum, in Cova, T., Miller, H., Beard, K., Frank, A.U., and Goodchild, M.F. (eds.), *Geographic Information Science: 5th International Conference, GIScience 2008*, Park City, Utah, September 23-26, 2008, Extended Abstracts, 242-244, 2008.
- Kinzel, M. and **Wright, D.**, New tools and strategies for spatial education, *Proceedings of the Eighth Annual ESRI Education User Conference*, San Diego, CA, Paper EdUC1290, 2008.
- Wright, D.J.**, The Arc Marine data model: Process and product, *GEOInformatics*, 11(3): 36-39, 41, 2008.
- Wright, D.J.**, Lassoued, Y., Bermudez, L., Nyerges, T., Haddad, and Dwyer, N., Semantic mediation as a gateway to interoperability, with a case study of the International Coastal Atlas Network (ICAN), in Cova, T., Miller, H., Beard, K., Frank, A.U., and Goodchild, M.F. (eds.), *Geographic Information Science: 5th International Conference, GIScience 2008*, Park City, Utah, September 23-26, 2008, Extended Abstracts, 201-218, 2008.

Workshop Report

- Dwyer, N. and **Wright, D.J.** *Report of International Coastal Atlas Network Workshop 3 on Federated Coastal Atlases: Building on the Interoperable Approach*, European Environment Agency, Copenhagen, Denmark, 65 pp. http://ican.science.oregonstate.edu/ican3_final_rpt.

Abstracts

- Kinzel, M. and **Wright, D.J.**, New tools and strategies for spatial education, *Proceedings of the Eighth Annual ESRI Education User Conference*, San Diego, CA, Paper EdUC1290, 2008.
- Kinzel, M. and **Wright, D.J.**, Using geovisualizations in the curriculum: Does multimedia enhance geography education? *Abstracts of the Association of American Geographers Annual Meeting*, Boston, MA, Paper 18301, 2008.
- Lassoued, Y., Bermudez, L., **Wright, D.**, and Boucelma, O., International Coastal Atlas Network: Ontology mediation for coastal web atlas interoperability, *Proceedings of the Third INSPIRE Conference, in conjunction with the Eleventh International Conference of the GSDI (GSDI 11)*, Rotterdam, The Netherlands, submitted for 2009.
- Wright, D.J.** and the Oregon Territorial Seafloor Mapping Task Force, The quest for a high-resolution map of the Oregon Territorial Seafloor in the context of

current west coast marine reserve initiatives, *Abstracts of the Association of American Geographers Annual Meeting*, Boston, MA, Paper 15723, 2008.

Wright, D., Dwyer, N., Lassoued, Y., and Boucelma, O., The International Coastal Atlas Network: An emerging spatial data infrastructure initiative, *Proceedings of the Third INSPIRE Conference, in conjunction with the Eleventh International Conference of the GSDI (GSDI 11)*, Rotterdam, The Netherlands, submitted for 2009.

Wright, D., Dwyer, N., Haddad, T., O'Dea, L., Hart, D., LaVoi, T., Nyerges, T., and Berman, M., Building the Digital Coast with the International Coastal Atlas Network, *Proceedings of Coastal GeoTools '09*, Myrtle Beach, SC, submitted for 2009.

PROPOSALS SUBMITTED (listed chronologically)

Data Management for Marine Geological and Geophysical Datasets (Extension of Arc Marine), **National Development Plan (of IRELAND) 2007-2013, Marine Institute Science, Technology & Innovation Programme, SeaChange Initiative**, P.I.: Yassine Lassoued (Coastal & Marine Resources Centre, University College Cork, IRELAND), 2/01/08 to 12/31/10, \$65,200 subcontract to D. Wright (OSU Geosciences). **Recommended for funding 01/05/08.**

GRADD: Global Research Alliance for Digital Data: A DataNet to Support Complex Systems Problem Solving, **NSF Office of Cyberinfrastructure, Data Interoperability Networks (DataNet)**, P.I.s: Lizabeth Wilson, Timothy Ahern, Tim Nyerges, Linda Shapiro, Stuart Weibel (UW); OSU Senior Personnel: Dawn Wright (OSU Geosciences), Jeremy Frumkin (Valley Library), 11/15/08 to 9/30/13, \$19,999,541 (**\$650,151** to OSU Geosciences).

Datapedia of Science Digital Atlases, **NSF Office of Cyberinfrastructure, Data Interoperability Networks (DataNet)**, Lead P.I.: John Helly, San Diego Supercomputer Center and 50 other personnel, roles to be determined, including Dawn Wright (OSU Geosciences),. PRE-PROPOSAL STAGE. 11/15/08 to 9/30/13, (no budget yet at this stage).

Increasing Diversity in the Earth Sciences (IDES) – A Track 2 Project, **NSF Opportunities for Enhancing Diversity in the Geosciences (OEDG), Track 2**, P.I.s: Shan De Silva (OSU Geosciences), Bob Duncan (COAS), Dawn Wright (OSU Geosciences), 06/01/09 to 05/31/14, \$1,304,832.

The Wisconsin Coastal Web Atlas: Building a Coastal Spatial Data Infrastructure for Wisconsin, **Wisconsin Sea Grant**, P.I.s: David Hart (U. of Wisconsin Sea Grant Institute), Steve Ventura and Nancy Wiegand (U. of Wisconsin-Madison), 02/01/10 to 01/31/13, \$120,000, (\$12,000 subcontract to D. Wright, OSU Geosciences).

*Departments and Underrepresented Students ALIGNED: Addressing Locally-tailored Information Infrastructure & Geoscience Needs for Enhancing Diversity, NSF Opportunities for Enhancing Diversity in the Geosciences (OEDG), Track 1, P.I.s: Patricia Solis (AAG), Ines Miyares (Hunter-CUNY); Senior Personnel: Dawn Wright (OSU Geosciences), Michael Solem and Rachel Franklin (AAG), Christine Rodrigue (Cal State-Long Beach), 09/01/09 to 09/30/12, **\$199,276.***

*TransAtlantic Workshops to Solidify an International Coastal Atlas Network, NSF Geography & Regional Science Program, P.I.: Dawn Wright (OSU Geosciences), 10/01/09 to 9/30/11, **\$63,404.***

NATIONAL/INTERNATIONAL SERVICE

Committee on Geophysical and Environmental Data, National Research Council, National Academy of Sciences.

Committee on Strategic Directions for the Geographical Sciences in the Next Decade, National Research Council, National Academy of Sciences.

Ocean Studies Board, National Academies (National Academy of Science, National Academy of Engineering, the Institute of Medicine, the National Research Council).

AAG National Councillor, Chair of the National Council.

Board of Directors, AAG Cyberinfrastructure Specialty Group.

UCGIS Research Committee, Chair.

UCGIS Membership Committee.

UCGIS Education Committee.

Judge for graduate student paper competition, 2008 UCGIS Summer Assembly.

Steering Committee and Technical Team, Marine Metadata Interoperability initiative, funded by NSF and led by MBARI, <http://marinemetadata.org>.

Program Committee, 9th Annual International Conference on Digital Government Research (dg.o 2008), Montreal, Canada, <http://www.dgo2008.org>.

Data Management Task Force, Integrated Ocean Drilling Program (IODP) Management International.

Advisory Board, Places & Spaces: Cartography of the Physical and the Abstract Project, <http://vw.indiana.edu/places&spaces/>.

External reviewer, promotion and tenure dossier, George Mason University.

Editorial Boards

Geography Compass, Wiley-Blackwell

Geospatial Solutions, Questex Media

International Journal of Geographical Information Science, Taylor & Francis

Journal of Coastal Conservation: Planning and Management, Springer

The Professional Geographer, Routledge

Transactions in GIS, Blackwell Publishers

Professional Referee/Reviewer

Journal Articles

- Feb 2008 *International Journal of Geographical Information Science*
Mar 2008 *Journal of Coastal Conservation: Planning and Management*
May 2008 *Geomatica*
Geochemistry, Geophysics, Geosystems (G³)
Computers & Geosciences
Jun 2008 Paper submitted to proceedings volume of the Fourth National
Cartographic Conference of New Zealand, GeoCart'2008,
Springer *Lecture Notes in Geoinformation and Cartography*
series
Jul 2008 *Eos, Transactions of the American Geophysical Union*
Nov 2008 *Information Sciences*

Proposals

- Jul 2008 Unwin, D.J., Tate, N.J., Foote, K.E., DiBiase, D., *Teaching
Geographic Information Science and Technology in Higher
Education*, Proposal for a new book via John Wiley & Sons,
Ltd., www.wiley.com
May 2008 Chairs of Excellence Research Program of the French National
Research Agency (ANR), Université of Paris-Sud and
Université de Versailles Saint-Quentin-en-Yvelines
Sep 2008 NSF, Geography & Regional Science, CAREER Program
Microsoft Ph.D. Scholarship Programme, Europe and Middle
East Research Division

ELECTRONIC PRODUCTS

- International Coastal Atlas Network Portal
<http://ican.science.oregonstate.edu>
GEO 599 Course Web Site, Responsible GIS Practice
<http://dusk.geo.orst.edu/ethics/>
Sabbatical Adventure Site
<http://dusk.geo.orst.edu/sabbatical08>

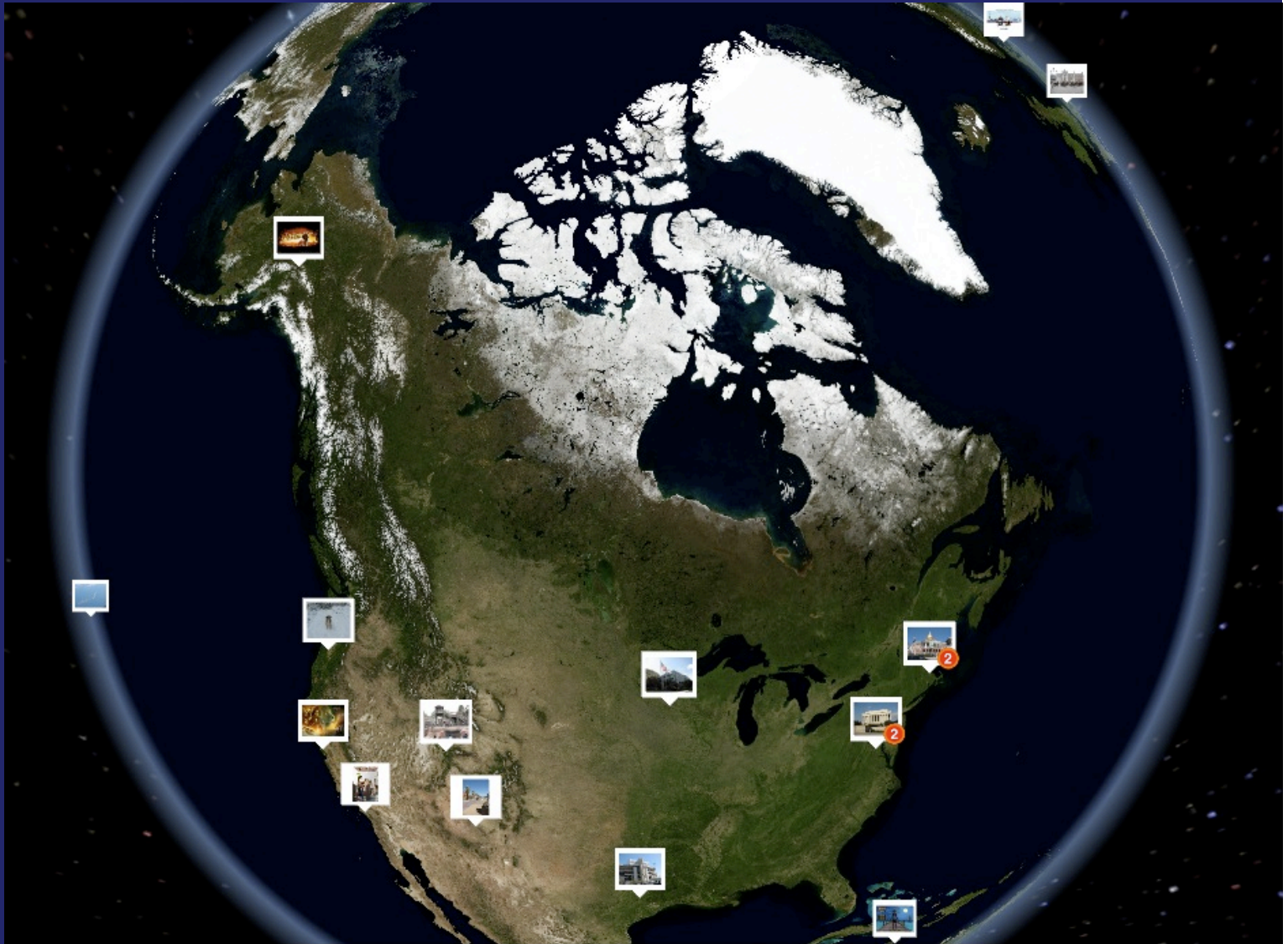
AWARDS/HONORS

- Fellow of the American Association for the Advancement of Science (AAAS)

Dawn's Sabbatical Adventures 2008



Click boxes on globe below to go to full photo galleries,
plus here's a [link](#) to some of my Oregon cycling...
and a recap of my [favorite movies and models](#)....



[FINAL REPORT]

[Welcome | Winter Fun | Belgium | Texas | Arizona | Washington, DC | Disneyland
Boston | Central Cal. | Minnesota & then U.S. Olympic Trials | Denmark | Alaska |
Woods Hole | Utah | Virginia | Hawaii | Deepsea Dawn's Home | 2001 Sabbatical | Email Dawn]

Last update: December 30, 2008
<http://dusk.geo.orst.edu/sabbatical08>

